



CONSTRUCTION STRUCTURE STRUKTUR STRUCTUUR	Tufting 1/10" saxony Tufté 1/10" saxony Getuftet 1/10" saxony Getuft 1/10" saxony
PILE MATERIAL COMPOSITION DU VELOURS POLMATERIAL POOLMATERIAAL	100% PA 6 IMPREL®
PRIMARY BACKING SUPPORT TRÄGERMATERIAL TUFTDOEK	Non woven PES Non tissé Vlies Felt
SECONDARY BACKING DOSSIER RÜCKEN TAPIJTRUG	Action Back
PILE WEIGHT POIDS DU VELOURS POLEINSATZGEWICHT POOLGEWICHT	Ca. 1.150 gr/m ²
TOTAL WEIGHT POIDS TOTAL GESAMTGEWICHT TOTAAL GEWICHT	Ca. 2.095 gr/m ²
PILE HEIGHT EPAISSEUR DU VELOURS POLHÖHE POOLHOOGTE	Ca. 5 mm
TOTAL HEIGHT EPAISSEUR TOTAL GESAMTHÖHE TOTALE DIKTE	Ca. 7 mm
TUFT DENSITY NOMBRES DE POINTS NOPPENZAHL AANTAL PUNTEN	Ca. 209 000/m ²
PILE DENSITY DENSITÉ DU VELOURS POLROHDICHTHE POOLDICHTHEID	Ca. 0.157 g/cm ³
CLASSIFICATION CLASSEMENT KLASSIFIKATION CLASSIFICATIE	EN 1307 33 - LC4
UPEC	U3s P3 E1 C0 Certification CSTB: 10/273
CASTOR CHAIR SUITABILITY CHAISE À ROULETTES STUHLROLLENEIGNUNG ROLSTOELGESCHIKTHEID	EN 985 A: intensive use
STAIR SUITABILITY ESCALIERS TREPPENEIGNUNG TRAPPENGESCHIKTHEID	EN 1963 A: intensive use

PERMANENTLY ANTISTATIC ANTISTATIC PERMANENT PERMANENT ANTISTATISCH PERMANENT ANTISTATISCH	ISO 6356 ≤ 2 kV
IMPACT NOISE RATING ISOLATION PHONIQUE TRITTSCHALLVERBESSERUNG GELUIDSISOLATIE	ISO 140-8 26 dB ΔLw
SOUND ABSORPTION ABSORPTION PHONIQUE SCHALLABSORPTIONSGRAD GELUIDSABSORPTIE	ISO 354 0.20 Qw
THERMAL RESISTANCE RÉSISTANCE THERMIQUE WÄRMEDURCHLASSWIDERSTAND WARMTEDOORLAATWEERSTAND	ISO 8302 0.09 m ² K/W
FASTNESS TO LIGHT SOLIDITÉ A LA LUMIÈRE LICHTECHTHEIT LICHTECHTHEID	ISO 105-B02 ≥ 5-6
COLOUR FASTNESS TO WATER SOLIDITÉ À L'EAU WASSERECHEITHEIT WATERECHTHEID	EN ISO 105-E01 ≥ 4-5
FIRE RESISTANCE COMPORTEMENT AU FEU BRENNVERHALTEN BRANDGEDRAG	EN 13501-1 Bfl-s1 (if glued)
RUBBING FASTNESS SOLIDITÉ AU FROTTEMENT REIBECHTHEIT WRIJFECHTHEID	EN ISO 105-X12 ≥ 4
WIDTH LARGEUR BREITE BREEDTE	EN ISO 3018 ca. 400 cm




TUV NORD
Systems
Vollständig Material Test
According to EN ISO 9000 Standard

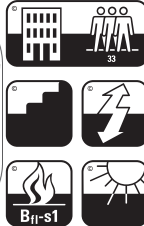
Suitable for Allergic Persons
Wall to wall carpet of allergen-tested material
3.2-2384/05




GUT
TESTED
ENVIRONMENT CARPETS TESTED FOR A BETTER LIVING ENVIRONMENT



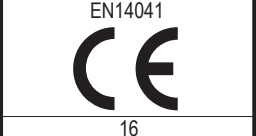
UPEC
moquettes touffetées et tissées en lés
<http://evaluation.cstb.fr>



Bfl-s1




EMISSIONS DANS L'AIR INTERIEUR
A+




EN14041
CE
16

DOP: 1011#1E0ABV
Textile Floor Covering EN1307
Notified body 2401



EAC

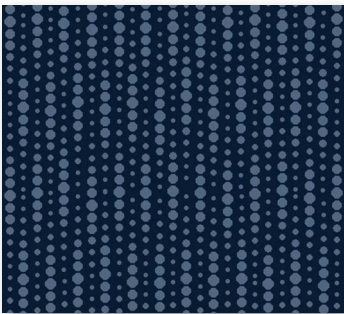
REG. NR
F8CC85E8
www.pro-dis.info



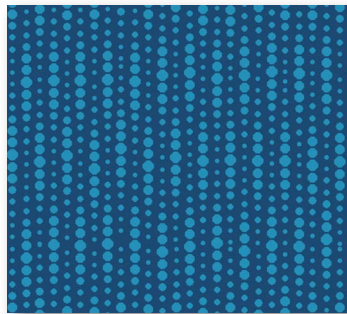
DL NA PCP HCHO DS



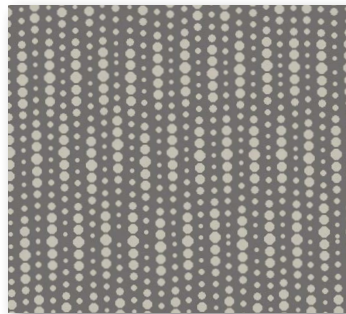
▲ ProLA1600



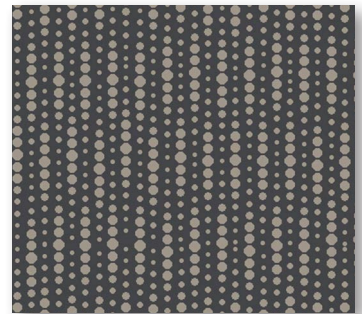
▲ ProLA7900



▲ ProLA7200



▲ ProLA4300



▲ ProLA9400

↔ ca.80 X ↓ ca.80 CM