

CONSTRUCTION Tufting 1/10" saxony
 STRUCTURE Tufté 1/10" saxony
 STRUKTUR Getuftet 1/10" saxony
 STRUCTUUR Getuft 1/10" saxony

PILE MATERIAL 100% PA 6 IMPREL®
 COMPOSITION DU VELOURS
 POLMATERIAL
 POOLMATERIAAL

PRIMARY BACKING Non woven PES
 SUPPORT Non tissé
 TRÄGERMATERIAL Vlies
 TUFTDOEK Felt

SECONDARY BACKING Action Back
 DOSSIER
 RÜCKEN
 TAPIJTRUG

PILE WEIGHT Ca. 1.150 gr/m²
 POIDS DU VELOURS
 POLEINSATZGEWICHT
 POOLGEWICHT

TOTAL WEIGHT Ca. 2.095 gr/m²
 POIDS TOTAL
 GESAMTGEWICHT
 TOTAAL GEWICHT

PILE HEIGHT Ca. 5 mm
 EPAISSEUR DU VELOURS
 POLHÖHE
 POOLHOOGTE

TOTAL HEIGHT Ca. 7 mm
 EPAISSEUR TOTAL
 GESAMTHÖHE
 TOTALE DIKTE

TUFT DENSITY Ca. 209 000/m²
 NOMBRES DE POINTS
 NOPPENZAHL
 AANTAL PUNTEN

PILE DENSITY Ca. 0.157 g/cm³
 DENSITÉ DU VELOURS
 POLROHDICHTE
 POOLDICHTHEID

CLASSIFICATION EN 1307
 CLASSEMENT 33 - LC4
 KLASSIFIKATION
 CLASSIFICATIE

UPEC U3s P3 E1 C0
 Certification CSTB: 10/273

CASTOR CHAIR SUITABILITY EN 985
 CHAISE À ROULETTES A: intensive use
 STUHLROLLENEIGNUNG
 ROLSTOELGESCHIKTHEID

STAIR SUITABILITY EN 1963
 ESCALIERS A: intensive use
 TREPPENEIGNUNG
 TRAPPENGESCHIKTHEID

PERMANENTLY ANTISTATIC ISO 6356
 ANTISTATIC PERMANENT ≤ 2 kV
 PERMANENT ANTISTATISCH
 PERMANENT ANTISTATISCH

IMPACT NOISE RATING ISO 140-8
 ISOLATION PHONIQUE 26 dB ΔLw
 TRITTSCHALLVERBESSERUNG
 GELUIDSISOLATIE

SOUND ABSORPTION ISO 354
 ABSORPTION PHONIQUE 0.20 αw
 SCHALLABSORPTIONSGRAD
 GELUIDSABSORPTIE

THERMAL RESISTANCE ISO 8302
 RÉSISTANCE THERMIQUE 0.09 m² K/W
 WÄRMEDURCHLASSWIDERSTAND
 WARMTEDOORLAATWEERSTAND

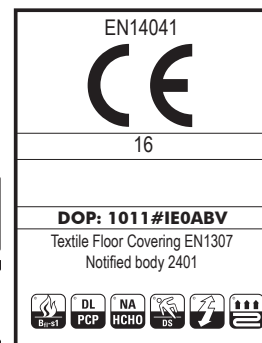
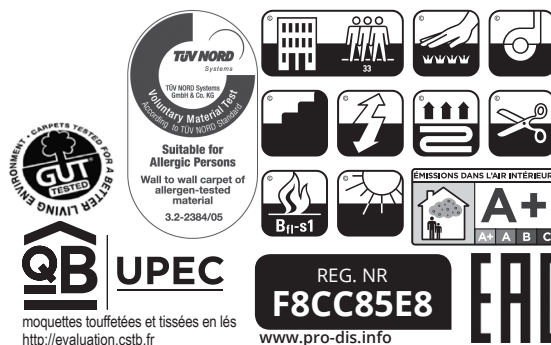
FASTNESS TO LIGHT ISO 105-B02
 SOLIDITÉ A LA LUMIÈRE ≥ 5-6
 LICHTECHTHEIT
 LICHTECHTHEID

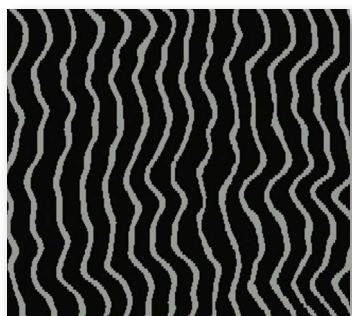
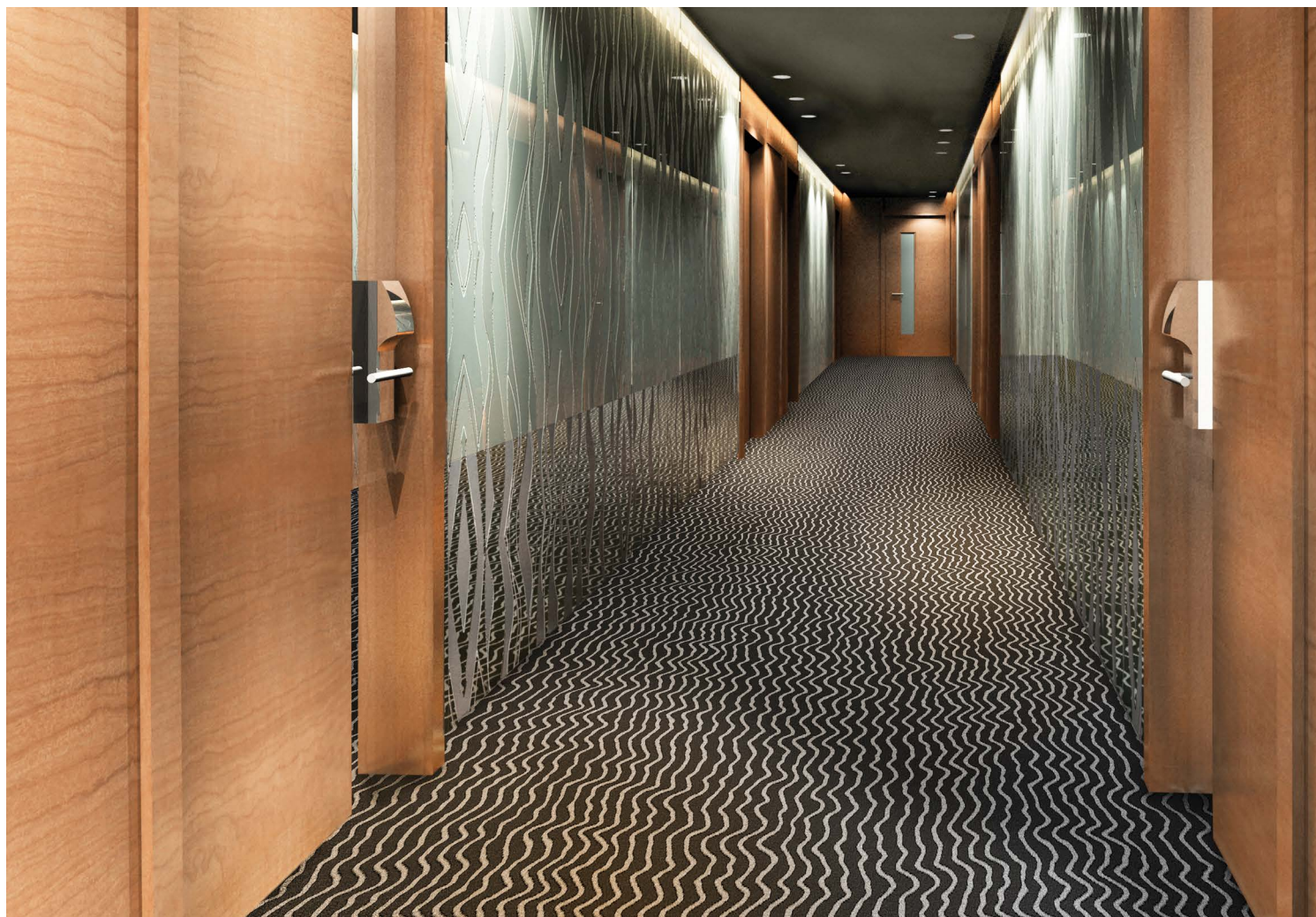
COLOUR FASTNESS TO WATER EN ISO 105-E01
 SOLIDITÉ À L'EAU ≥ 4-5
 WASSERECHTHEIT
 WATERECHTHEID

FIRE RESISTANCE EN 13501-1
 COMPORTEMENT AU FEU Bfl-s1 (if glued)
 BRENNVERHALTEN
 BRANDGEDRAG

RUBBING FASTNESS EN ISO 105-X12
 SOLIDITÉ AU FROTTEMENT ≥ 4
 REIBECHTHEIT
 WRIJFECHTHEID

WIDTH EN ISO 3018
 LARGEUR ca. 400 cm
 BREITE
 BREEDTE





▲ ProQU9800



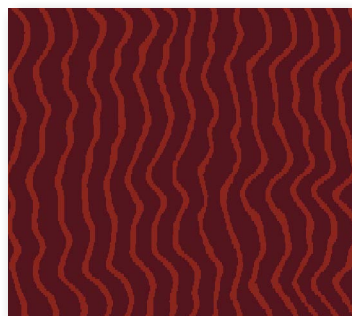
▲ ProQU4900



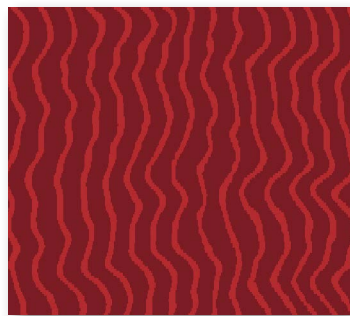
▲ ProQU4700



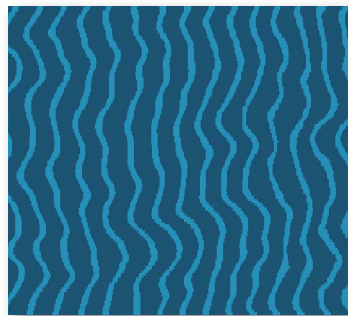
▲ ProQU3900



▲ ProQU1600



▲ ProQU1100



▲ ProQU7200



▲ ProQU2400

↔ ca.66,5 x ↕ ca.66,5 CM