









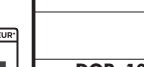
CONSTRUCTION STRUCTURE STRUKTUR STRUCTUUR	Tufting 1/10" saxony Tufté 1/10" saxony Getuftet 1/10" saxony Getuft 1/10" saxony
PILE MATERIAL COMPOSITION DU VELOURS POLMATERIAL POOLMATERIAAL	100% PA 6 IMPREL®
PRIMARY BACKING SUPPORT TRÄGERMATERIAL TUFTDOEK	Non woven PES Non tissé Vlies Felt
SECONDARY BACKING DOSSIER RÜCKEN TAPIJTRUG	Action Back
PILE WEIGHT POIDS DU VELOURS POLEINSATZGEWICHT POOLGEWICHT	Ca. 900 gr/m <sup>2</sup>
TOTAL WEIGHT POIDS TOTAL GESAMTGEWICHT TOTAAL GEWICHT	Ca. 1.875 gr/m <sup>2</sup>
PILE HEIGHT EPAISSEUR DU VELOURS POLHÖHE POOLHOOGTE	Ca. 4 mm
TOTAL HEIGHT EPAISSEUR TOTAL GESAMTHÖHE TOTALE DIKTE	Ca. 7 mm
TUFT DENSITY NOMBRES DE POINTS NOPPENZAHL AANTAL PUNTEN	Ca. 170 000/m <sup>2</sup>
PILE DENSITY DENSITÉ DU VELOURS POLROHDICHTE POOLDICHTHEID	Ca. 0.143 g/cm <sup>3</sup>
CLASSIFICATION CLASSEMENT KLASSIFIKATION CLASSIFICATIE	EN 1307 32 - LC2
UPEC	U3 P3 E1 C0 Certification CSTB: 10/276-07
CASTOR CHAIR SUITABILITY CHAISE À ROULETTES STUHLROLLENEIGNUNG ROLSTOELGESCHIKTHEID	EN 985 A: intensive use
STAIR SUITABILITY ESCALIERS TREPPENEIGNUNG TRAPPENGESCHIKTHEID	EN 1963 A: intensive use

PERMANENTLY ANTISTATIC ANTISTATIQUE PERMANENT PERMANENT ANTISTATISCH PERMANENT ANTISTATISCH	ISO 6356 ≤ 2 kV
IMPACT NOISE RATING ISOLATION PHONIQUE TRITTSCHALLVERBESSERUNG GELUIDSISOLATIE	ISO 140-8 24 dB ΔLw
SOUND ABSORPTION ABSORPTION PHONIQUE SCHALLABSORPTIONSGRAD GELUIDSABSORPTIE	ISO 354 0.20 Cw
THERMAL RESISTANCE RÉSISTANCE THERMIQUE WÄRMEDURCHLASSWIDERSTAND WARMTEDOORLAATWEERSTAND	ISO 8302 0.15 m <sup>2</sup> K/W
FASTNESS TO LIGHT SOLIDITÉ A LA LUMIÈRE LICHTECHTHEIT LICHTECHTHEID	ISO 105-B02 ≥ 5-6
COLOUR FASTNESS TO WATER SOLIDITÉ À L'EAU WASSERECHTHEIT WATERECHTHEID	EN ISO 105-E01 ≥ 4-5
FIRE RESISTANCE COMPORTEMENT AU FEU BRENNVERHALTEN BRANDGEDRAG	EN 13501-1 Bfl-s1 (if glued)
RUBBING FASTNESS SOLIDITÉ AU FROTTEMENT REIBECHTHEIT WRIJFECHTHEID	EN ISO 105-X12 ≥ 4
WIDTH LARGEUR BREITE BREEDTE	EN ISO 3018 ca. 400 cm




**TUV NORD**  
Systems  
TUV NORD Systems GmbH & Co. KG  
Primary Material Test  
Approved by TUV NORD (Germany)

Suitable for Allergic Persons  
Wall to wall carpet of allergen-tested material  
3.2-2384/05












EN14041



16


**DOP: 1011#IE0ABV**  
Textile Floor Covering EN1307  
Notified body 2401





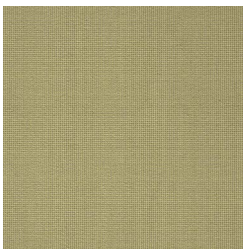
**UPEC**  
moquettes touffées et tissées en lés  
<http://evaluation.cstb.fr>

REG. NR  
**1721C645**  
[www.pro-dis.info](http://www.pro-dis.info)

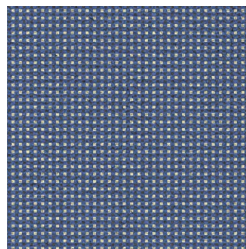




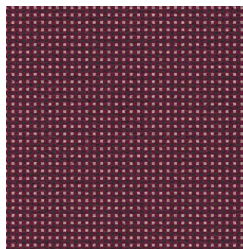
ProSC2400



ProSC7300



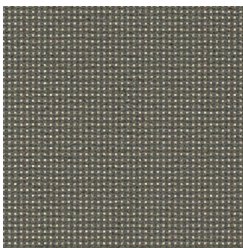
ProSC1600



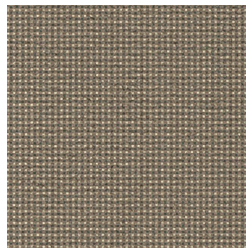
ProSC19700



ProSC19500



ProSC14300



ProSC13400



ProSC19300

